

## BWCE Home Energy Programme

**Sara Grimes, Head of  
Community Business  
Development**



**Bath & West  
Community Energy**



# Home Energy Programme: Two elements

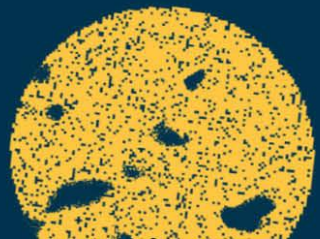
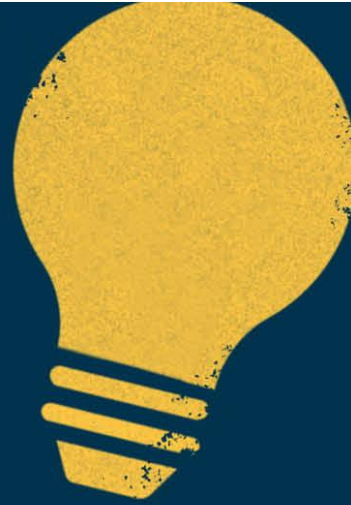
---

- **Services**
- **Inspiration**





# HOME ENERGY SERVICE JUST LAUNCHED!



# Services available to book now

## HOME ENERGY EFFICIENCY PLAN

A cost-effective home energy assessment with tailored recommendations to enhance your home energy efficiency.

[View survey](#)

**£126**



## FUTUREPROOF SURVEY & REPORT

A detailed whole-house energy report. With full-measured survey, bespoke options appraisal and debrief session.

[View survey](#)

From  
**£280**  
Based on  
house size



## LISTED BUILDING CHAMPION SURVEYS

For listed building owners. A home energy survey with free expert listed building consent advice, for participants in our Champion programme.

[View surveys](#)

**£90**





# Coming soon...

## HEAT PUMP ASSESSMENT

Our **Heat Pump Assessment** includes a home visit, review and calculations, to tell you how a heat pump would work in your home.

[Learn more](#)



## Post Survey Support

Help with quotes, planning consents, project management and quality assurance

Target launch:  
New year 2025



## Home Energy Neighbourhood Pilots

Home Energy Efficiency Plans for neighbours with similar house types, plus help getting quotes

Grants enable further discounts

Starting winter 24/25,  
subject to grant





# GREEN OPEN HOMES B&NES

**9 events, including:**

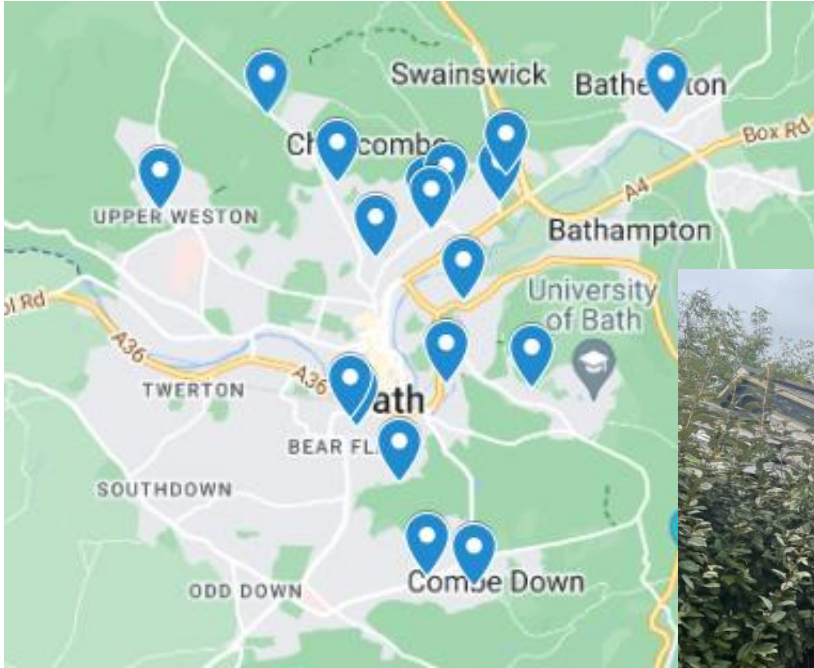
**Peasedown – 21<sup>st</sup> Sept**

**Forum – 26<sup>th</sup> Sept**

**Bath – 12<sup>th</sup> & 13<sup>th</sup> Oct**









## PEASEDOWN environment GROUP

FREE  
EVENT

Presents

# GREEN PEASEDOWN DAY

THE HIVE PEASEDOWN ST JOHN

Saturday 21st September 10am-3pm

		3 PSJ HOMES WILL BE OPEN 10am-3pm to show how they are saving energy PLUS		
	<b>Good Energy</b> <small>Renewable energy company</small>	come and see how solar panels work installation costs, practicalities, savings		
	<b>Transition Bath</b> <small>climate · community · future</small> Climate Hub BANES	<b>CAM VALLEY WILDLIFE GROUP</b>		
	<b>centre for sustainable energy</b>			
		<b>Bath &amp; West Community Energy</b> <small>Generating local energy</small>		

**18 homes in Bath,  
including new ones**



# Thank you!

